



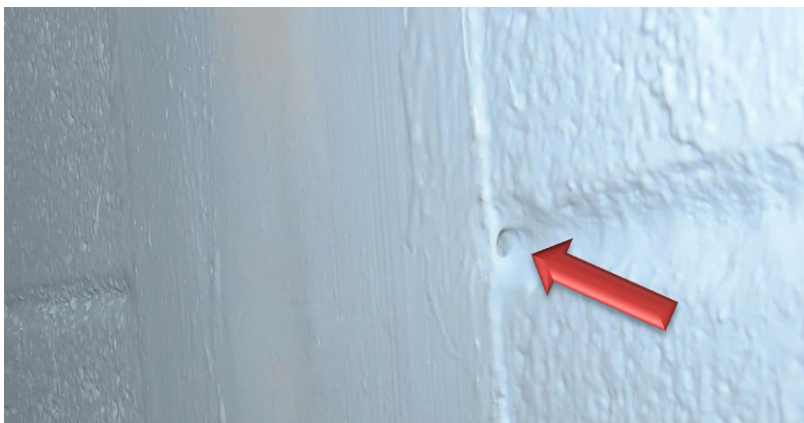
When installing liquid AVB and peel and stick membrane on CMU, unless the CMU joints are struck flush, the typical concave joints will create an opening in the air barrier system under the peel and stick membrane.

The product installation order will not change the concern.

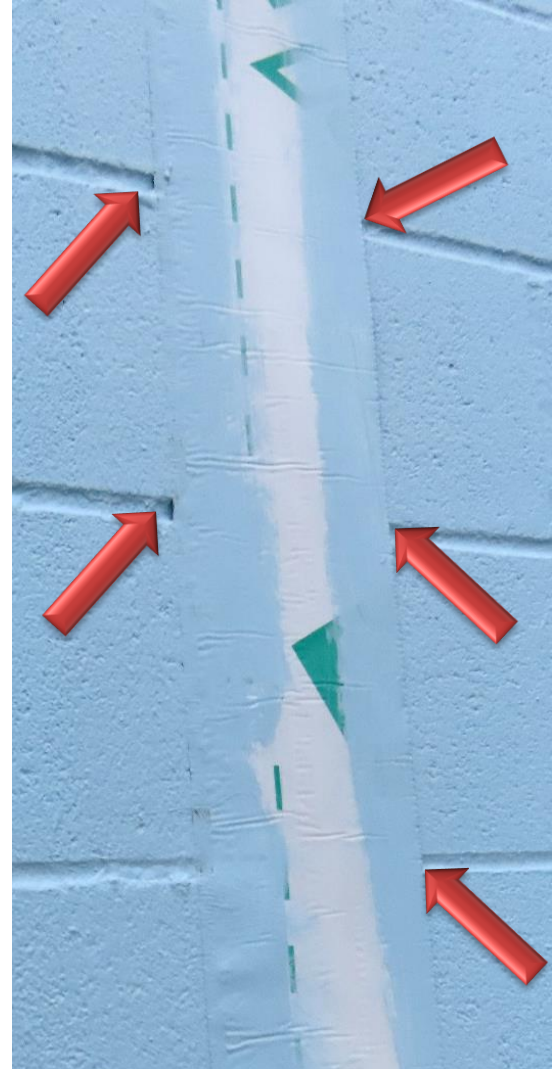
(spray first vs peel and stick membrane first)



Installing liquid & peel and stick on CMU walls



Adding more liquid generally will not solve the concern – sealant is needed at the edges



Gaps will exist at the CMU joints between the peel & stick and the liquid

Installing the manufacturer's sealant over the joint between the peel and stick membrane and the liquid AVB will close off the openings that will likely exist at the CMU joints.

This may or may not be a requirement from the AVB Manufacturer; however, it will be necessary to avoid gaps at the CMU joints.

Make sure the concern is identified early and properly bid.

